

SKETCH A MIRRORED PATTERN

Use a sketching app to draw a pattern inspired by a 700 year-old bowl!



Look closely at this bowl from 14th century Syria. What colours do you see? What kind of designs does it have?

This bowl has been decorated with panels of blue and white filled with repeating details, or patterns. In the middle of the design, there is a symmetrical flower. What is your favourite part of this design?

You can zoom in to see the patterns on this bowl from the collection of the Aga Khan Museum by clicking [here](#).

DID YOU KNOW

The blue colour used to paint this bowl is called cobalt blue. Cobalt blue was a very popular glaze used in Islamic pottery.

Image: **Bowl with panels of cobalt blue and white**, Syria, 14th century, fritware, with blue and black decoration under a transparent glaze, 8 x 17.7 x 5.7 cm, AKM783

ACTIVITY

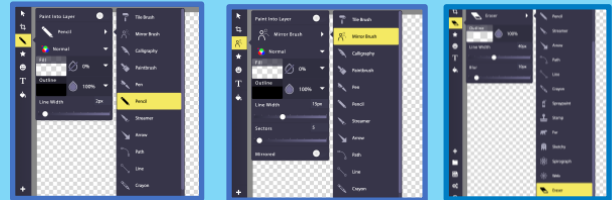
MATERIALS:


Phone, tablet, computer, or any other device

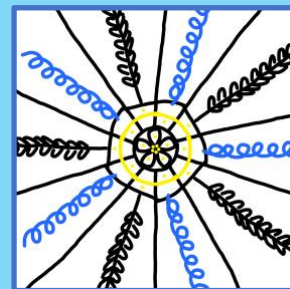
STEPS:

Go to the free web application Sketchpad by clicking [here](#).

Click the arrow next to the pencil shown on the toolbar on the left of the screen. In the box that shows up, click on pencil again and explore options that appear in the bar. Choose the 'Mirror Brush' option.



Now start sketching and watch your designs being mirrored! Change the colour of your pen by clicking on 'Outline.' You can erase your work by selecting 'Eraser' instead of 'Mirror Brush' on the toolbar, or by clicking on the undo arrow  on the right of the screen.



Download your finished drawing by clicking on 'Export' on the toolbar, and share your work with us at: learn@agakhanmuseum.org